



Certificate in AI & Data Science



Content

Module 1

Fundamentals of AI and Data Science

Module 2

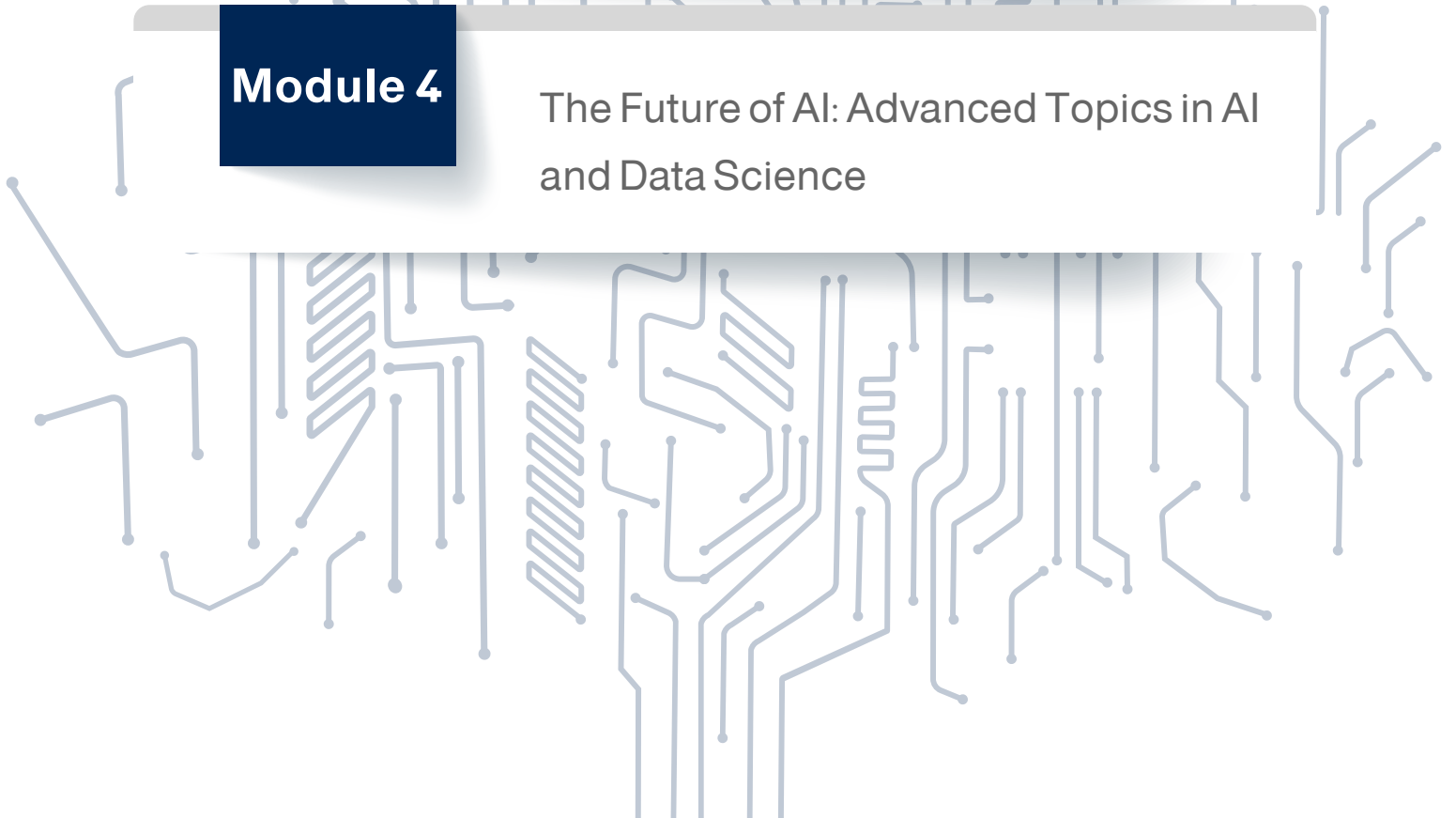
Leveraging AI: Industry Applications
for Growth

Module 3

Data Analysis; AI Security and Ethical
Considerations

Module 4

The Future of AI: Advanced Topics in AI
and Data Science



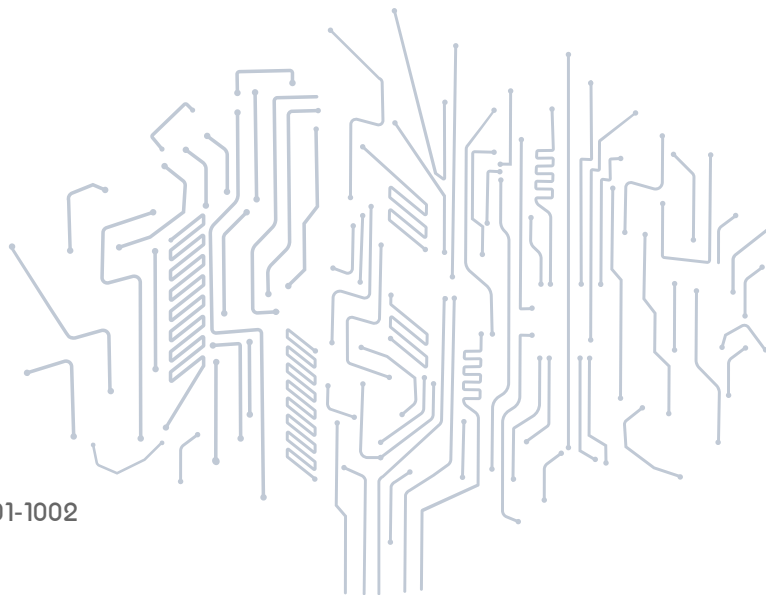
Delivery Format

- Completed in 4 Months
- Total Teaching Hours: 48
- Each session will be conducted once weekly every Friday on PU premises
- Timing: 4:00pm - 7:10pm
- Fees: \$650

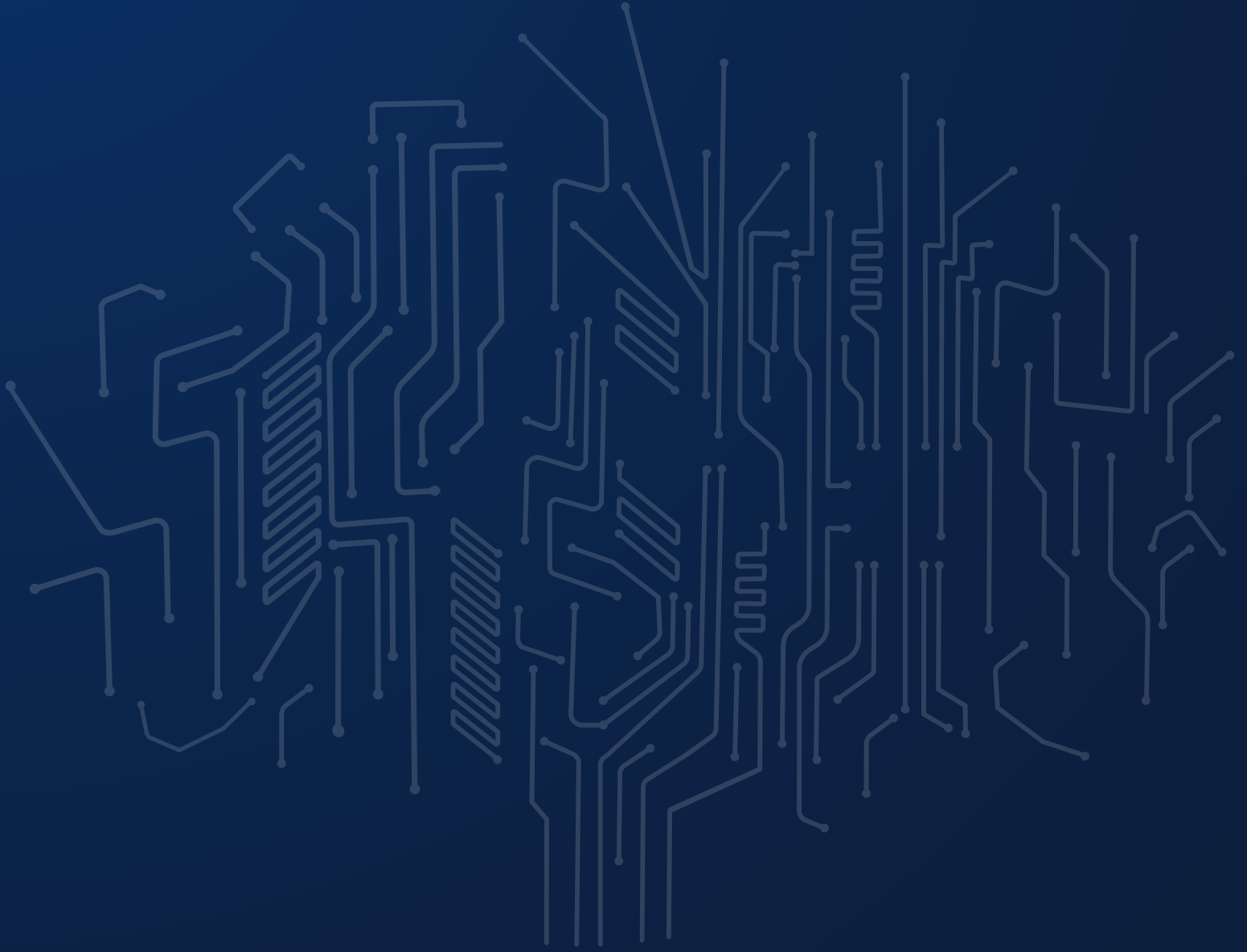
Module	Week 1	Week 2	Week 3	Week 4	Monthly Total Teaching Hours per Module
Module 1	3	3	3	3	12
Module 2					
Module 3					
Module 4					
Grand Total Teaching Hours					48

Admissions Criteria

- Proficiency in English (reading, writing, and communication).
- University graduates or currently enrolled University students from diverse academic backgrounds keen on entering the rapidly evolving tech sector, with a good GPA.
- Working professionals seeking to enhance their competencies and expertise in the fields of AI and Data Science.
- Start-ups or companies endeavoring to revolutionize their operations by enhancing their workforce's skills in this domain.



For more information:
admissions@pu.edu.lb
+9617420620 extension 1001-1002



THANK YOU